

Impact Report 2019 - 2021



We see you.

Welcome to our 2019-2021 Impact Report!

As we gather at Braithwaite Hall in Croydon this year, we look back on the challenging times we have had over the last two years and celebrate the fact that we can now come together to share in our successes and look to the future.

Whilst we had some illness amongst LLC staff and learners, we escaped some of the more serious impacts of the Covid pandemic. That cannot be said of several of our partners who lost family members, staff and Board members. Our thoughts and sympathies go to them.

In this report we provide a snapshot of the learners we have worked with and what they have achieved. We shall also hear from them in the form of quotes and comments.



Stephen Jeffery
Chief Executive Officer
London Learning Consortium



London Learning Consortium would like to thank all the tutors, staff, employers, partners, subcontractors, community grants providers, referrals, learners, board members and funders for the effort, perseverance and achievements demonstrated over these years, and their contributions in the creation of this publication.

Find out more:
www.londonlc.org.uk



SUPPORTED BY
MAYOR OF LONDON



INVESTORS IN PEOPLE™
We invest in people Silver



Coast to Capital



Shaping ourselves for the future



The last two years have seen several significant changes in the further education sector. One major policy change from our main funders (ESFA) has been the limitation of using subcontractors. As a consortium, this has represented a change in how we can deliver services in the future. Whilst our funding from the GLA has not been subjected to such restrictions most of our funding has and therefore we are in future only allowed to work with very few organisations. This restriction has meant that we are shifting our focus at LLC to direct sales and delivery and asking that

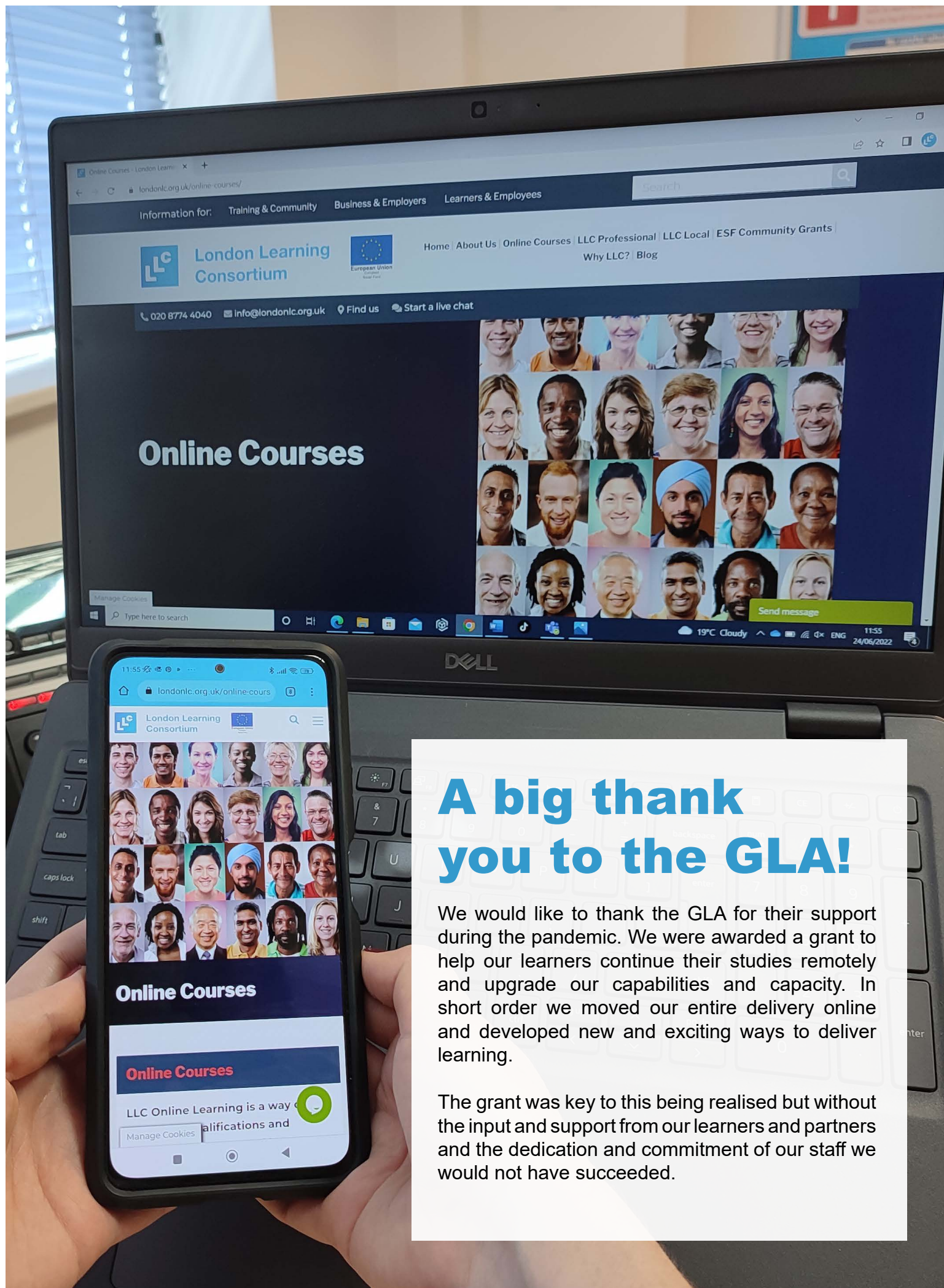
our sister Charity London Learning Foundation (LLF) move more into the community and small provider space.

In 2020 shortly after the first lockdown, LLC acquired a Young people's training provider on the Sussex coast. This has enabled LLC to offer new programmes and develop its services in new areas. DV8 has undergone major positive changes and is growing well under new Governance and leadership.

To enable LLC to operate with others in a collaborative way we have set up

a new venture. This is the formation of an umbrella company The London & Coastal Group (L&CG). This new entity provides a vehicle for like-minded organisations to join us and work collectively under a revised consortium model. Initially LLC, LLF and DV8 have formed the group with an invitation to others to join and generate new opportunities with us.





A big thank you to the GLA!

We would like to thank the GLA for their support during the pandemic. We were awarded a grant to help our learners continue their studies remotely and upgrade our capabilities and capacity. In short order we moved our entire delivery online and developed new and exciting ways to deliver learning.

The grant was key to this being realised but without the input and support from our learners and partners and the dedication and commitment of our staff we would not have succeeded.

A photograph of a busy street in South London. The street is lined with multi-story buildings housing various shops. Visible shop signs include 'Deodan Beauty Salon', 'K&A FOOD CENTRE', and 'K&A'. There are several pedestrians walking on the sidewalk, some pushing a stroller. A red double-decker bus is visible in the distance on the right side of the street. The sky is overcast and grey. The overall scene depicts a vibrant, everyday urban environment.

Community Work in Action

LLC is working across South London and the South East to make grants of up to £20K to local third sector organisations to make a difference in their local communities. We have delivered our ESF Community Grants for two years with another 18 months to go.

Local panels of assessors look at the impact that the grants will make in the community and award the funds based on their assessments. We are very pleased to manage these funds on behalf of ESF/ ESFA and the GLA, Coast to Capital LEP and most recently the South East of England LEP.

The London South grants applicants must deliver their activities and target residents from within any of the Local Authorities listed below:

- **Croydon**
- **Kingston upon Thames**
- **Richmond upon Thames**
- **Merton**
- **Sutton**



The Coast to Capital grants applicants must deliver their activities and target residents from within any of the Local Authorities listed below:

- **Arun (West Sussex)**
- **Adur (West Sussex)**
- **Brighton and Hove (Brighton and Hove Unitary Authority)**
- **Chichester (West Sussex)**
- **Crawley (West Sussex)**
- **Epsom and Ewell (Surrey)**
- **Horsham (West Sussex)**
- **Mid Sussex (West Sussex)**
- **Mole Valley (Surrey)**
- **Reigate and Banstead (Surrey)**
- **Tandridge (Surrey)**
- **Worthing (West Sussex)**



Below is a list of few ESF Community Grants Programmes delivered within the Coast to Capital Area. Over the period, 54 Programmes successfully benefited from the ESF Community.

Name of Organisation	Borough	Brief Description of Activity
Building Heroes Education Foundation	Brighton & Hove	Targeting the veteran/ex forces community a choice of two courses either a business start-up course or employability skills.
Cute Dog Consulting	Chichester & Adur	A 5-month confidence building and pre-employment training intervention for young people with learning disability and physical and mental health barriers to help them on their journey to learning and work. Employer brokerage and job creation.
Grace Eyre Foundation	Brighton & Hove	Range of activities to support adults with learning disabilities and/ or autism to build confidence, motivation, increase self-efficient and employability skills via supported work buddy placements and 1-2-1 sessions.
Trust for Developing Communities	Brighton & Hove	Work with residents to identify their learning needs and aspirations. Provide support through IAG to develop a personalised learning pathway to move closer to employment.
WSX Enterprise Ltd	Arun	A project to help unemployed and inactive people in the labour market (incl. graduates and carers) into self-employment. Includes group sessions, 1-2-1s, employability skills & mentoring.

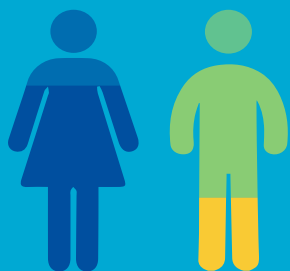
CUTE DOG CONSULTING HAS BEEN WORKING WITH LLC SINCE 2019, AND HAS DELIVERED 7 CONTRACTS, TWO VIA LONDON SOUTH AND FIVE VIA COAST TO CAPITAL



Below is a list of few ESF Community Grants Programmes delivered within the London South Area. Over the period, 42 Programmes successfully benefited from the ESF Community.

Name of Organisation	Borough	Brief Description of Activity
Building Pathways	Croydon	Building Pathways Careers and Mentoring Project aims to attract, inspire, and support Croydon and Merton residents into construction careers via our existing employers network operating in these boroughs. The project will run for 6 months between August 2020 to January 2021.
JobPlus Ltd	Croydon	Jobplus is a community-based learning and development provider that delivers services across employability support, skills development, mentoring, recruitment, and employer engagement support in South London. Jobplus offer bespoke and tailored solutions to support participants to obtain employer-led skills geared towards progressing participants into sustainable employment.
KAG Advocacy	Kingston Upon Thames	Provide the First Steps to Work project. Training volunteers to act as mentors, matching mentors with beneficiaries and supporting people to achieve their goals for employment and/or education.
Play Place Innov8	Croydon	A youth work style approach to engage 'hidden NEETS' including outreach, one to one support, action planning and accredited training opportunities.
Royal Assoc for Deaf People	Croydon, Sutton	Programme of workshops to improve confidence, financial capability, and employability skills. Job club providing individual support and guidance. All activity will be carried out using British Sign Language.

What was our impact in numbers?



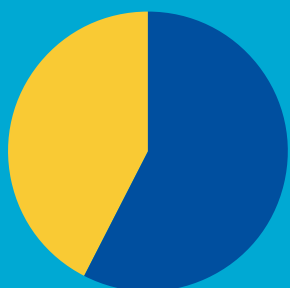
Learner participation
by gender

Female: 61.4%
Male: 38.6%



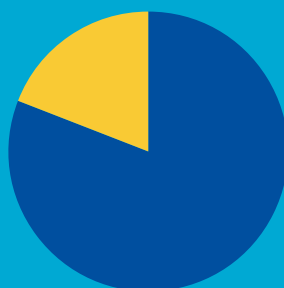
Learner participation
by ages

16-18: 13.6%
19-24: 24.2%
25-49: 51.0%
50+: 11.2%



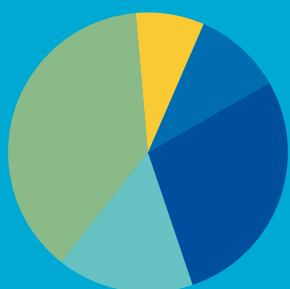
Learner participation
by ethnicity

BAME: 57.5%
Non BAME: 42.5%



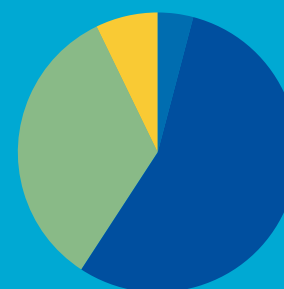
Learner participation
by Learning Difficulty or
Disability (LLDD)

LLDD: 19.1%
Non LLDD: 80.9%



Learners by
Prior Attainment

Entry: 7.9%
L1: 10.2%
L2: 28.1%
None: 15.8%
Other L3+: 38.0%



Funding by level

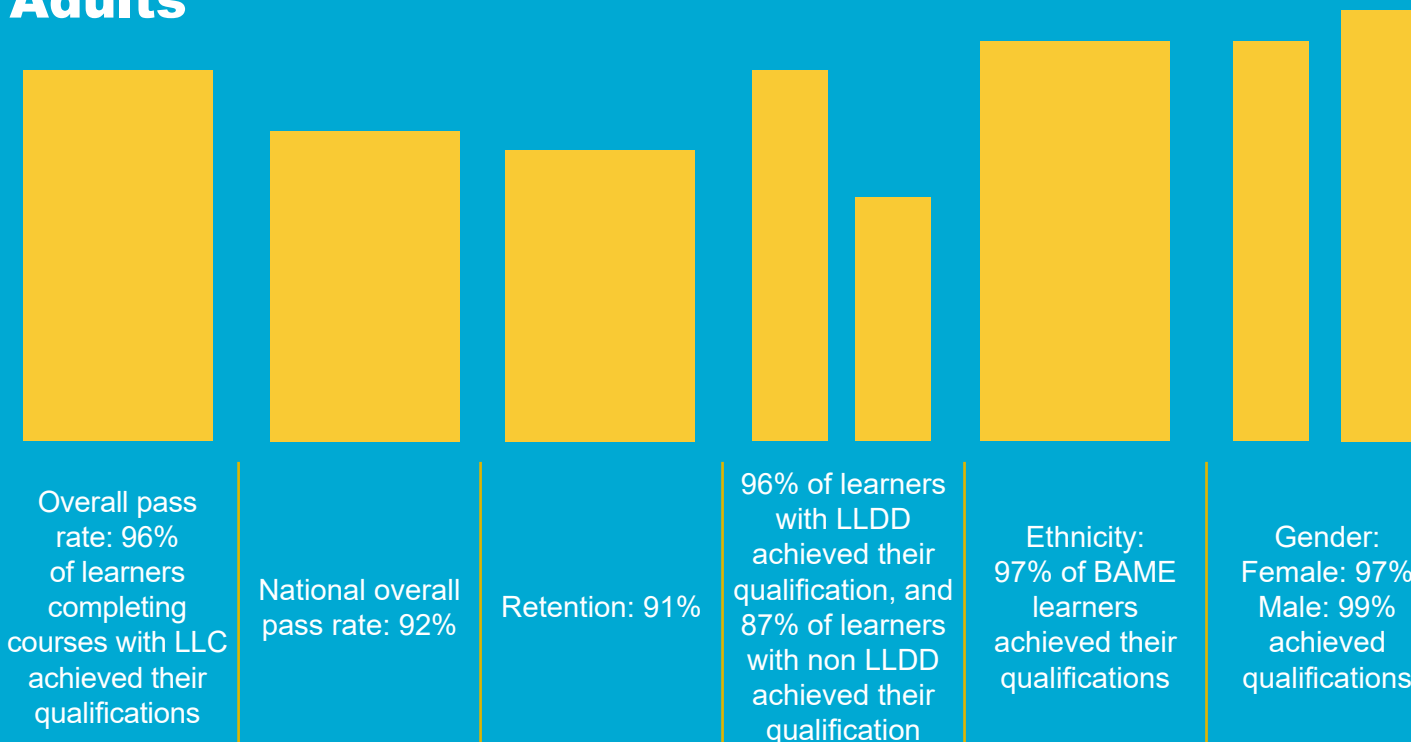
Entry: 4.1%
Level 1: 55.1%
Level 2: 33.6%
Level 3 + 7.2%



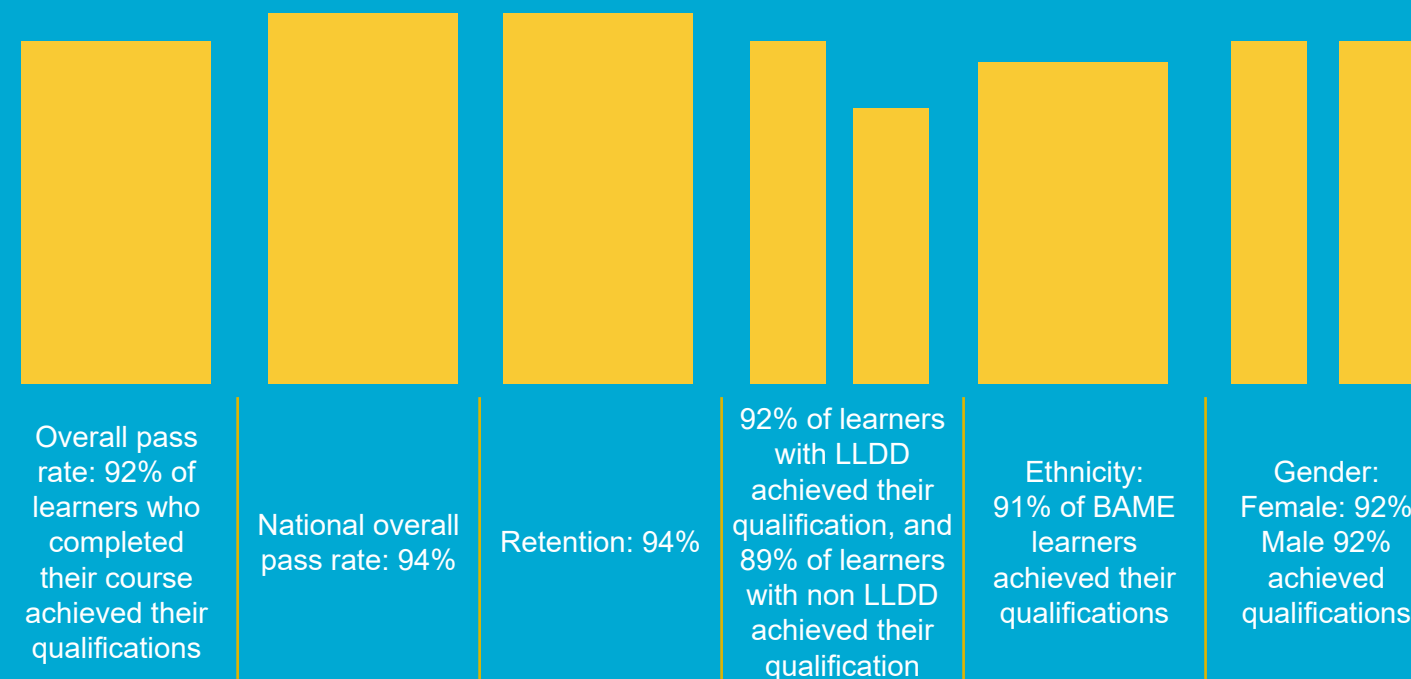
Top 5 courses

- Functional skills Maths
- Functional skills English
- Award in Support Work in Schools and Colleges
- Certificate in Supporting Teaching and Learning in Schools
- Certificate in the Principles of Warehousing and Storage

Adults



Traineeships



42%

of LLC learners come from the most deprived postcodes in London



What did our learners say?

“I really like the course and all the information I learned about. My tutor was brilliant, I felt she made everyone very comfortable, she was informative, supportive, always available when you needed her help and was always smiley and positive which brought a lovely aura to the class when everyone signed on in the morning”.

“I enjoyed the challenge of this course, it was a lot harder than I expected but it is definitely rewarding towards the end”.

“The course really helped me to build up my self-confidence and motivated me. I think this course is a steppingstone for my success”.

“I liked that my course was online, and I was able to meet new people on the course who were also supportive. I liked how much resources and guidance my tutor provided”.

“I enjoyed the work placements and how much I learned. I liked how it gave me a better understanding on how to work in the future”.

I enjoyed the course as the Tutor is very firm, passionate, honest and understanding. I like being in the class as the group was small, I was familiar with all individuals. The students are polite, respectful, and understanding. The overall atmosphere in the class was positive and I felt included in all aspects”.

“The assessor on my apprenticeship course has been very good she really stimulated my thoughts and curiosity now I understand a lot more”.



“What’s best about LLC is that learning here, I’ve actually made progress. I’ve started something and got into a position where I didn’t think I would be originally. I didn’t realise that it would actually go this well. I had no idea that I was going to be offered a job here so that was really out of the blue. I’ve now got a good job and they say I’m surpassing expectations.”

- Craig

“I looked at the website and saw that LLC ensures that the programmes are designed around their consumers’ needs and they always provide high quality and effective learning experience which was appealing to me because it made me feel confident that I would actually be learning some new skills and the traineeship would be a good use of my time”.

“I enjoyed the group discussions and how we were able to have friendly debates. My tutor kept the class motivated and was always smiling and positive”.

“I liked that I could turn to anyone on the team for support and I also liked the fact that there were numerous skills to gain and feel I now have a better understanding of what I need to/ want to do next”.

“I like the fact that the course is interactive and engaging for everyone (working from home or being in the building). The lessons moved at a good pace that no one is left behind or confused and it is a comfortable workplace to ask any questions etc. I managed to learn things from all the modules that were taught and gain refreshers also”.

“The traineeship programme has put me back in the field, it’s given me a new sense of momentum in ultimately getting a job”.

- Samuele





“I must say LLC is amazing. Amazing people, amazing school, amazing tutors. They are there in every step, they don’t leave you behind”.

- Uzma

“I like the fact that the course was completely new for me since I am living in UK and I learned a lot about everything related with working at schools, legislation, etc”.

“Being able to have a better understanding of the way I can develop myself and notice the barriers that could get in the way. Helping with my strengths that sometimes we don't see”.

“When enrolling on the course the staff who I spoke were very friendly answering my questions and also giving me a better understanding of how I can use these new skills once I've passed the course”

“The traineeship programme works for people who do not know what to do with their career paths. The programme will give you opportunities, it provided me with the skills needed in the workplace”.

- Sakil





“The traineeship programme has helped me to boost my communication and confidence levels. It has allowed me to gain opportunities into apprenticeships and full-time work”.

- Arulini

“The staff really help you out with your mental health, they don’t just focus on work experience, but they care about your well-being. They give you a taste of what adulthood is like before jumping in the deep end”.

- Carla




Find out more:

 www.londonlc.org.uk

 info@londonlc.org.uk

 020 8774 4040

 **Visit us:**
London Learning Consortium
Christopher Wren Yard
119 High Street, 1st Floor
Croydon
CR0 1QG

Follow us:

[linkedin.com/company/london-learning-consortium/](https://www.linkedin.com/company/london-learning-consortium/)



[@londonlearningconsortium](https://www.facebook.com/londonlearningconsortium)



[@londonlearningconsortium](https://www.instagram.com/londonlearningconsortium)



[@LLClivenews](https://twitter.com/LLClivenews)



**We see you
building a
better life.**

SUPPORTED BY
MAYOR OF LONDON



INVESTORS IN PEOPLE™
We invest in people Silver



Coast to Capital



We see you.